

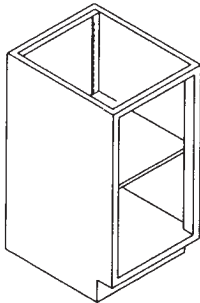
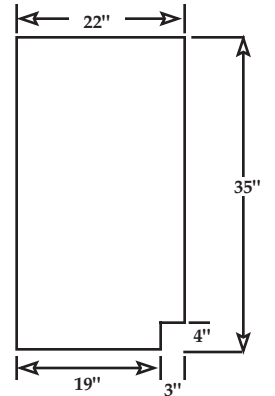
BASE CABINETS *Standing/Counter Height*

Standing/Counter Height 35" High x 22" Deep. Units are available in various widths as shown. Drawer units feature full extension slides. A single shelf is standard in the units shown. Additional shelves are available (see page 11). Specify left or right hand doors. Hand is indicated by side of door upon which hinge is located.

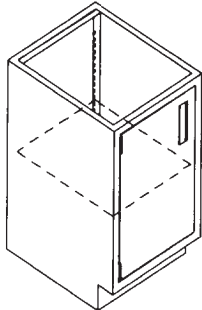
Part Numbering System

Sample: B3536-048 1 = Base unit 4 = # Doors
 12233-456 2 = Height 5 = # Drawers
 3 = Width 6 = # Half Drawers

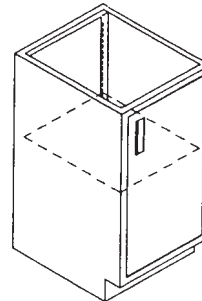
*"F" = File Drawer
 *"S" = Sink Unit
 *"P" = Panel
 *"R" = Right hinge facing cab.
 *"L" = Left hinge facing cab.



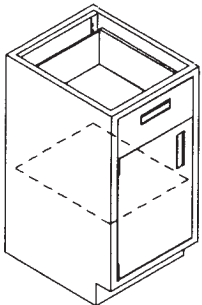
B3515-000
B3518-000
B3524-000



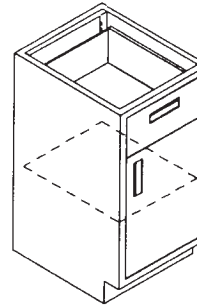
B3515-100(L)
B3518-100(L)
B3524-100(L)



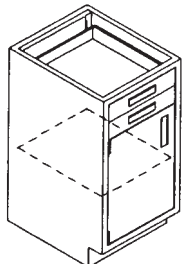
B3515-100(R)
B3518-100(R)
B3524-100(R)



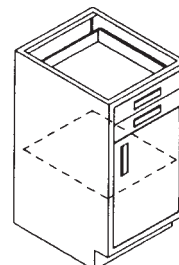
B3515-110(L)
B3518-110(L)
B3524-110(L)



B3515-110(R)
B3518-110(R)
B3524-110(R)



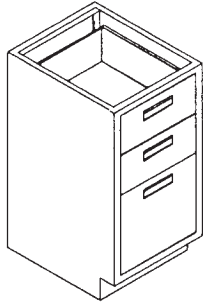
B3515-102(L)
B3518-102(L)
B3524-102(L)



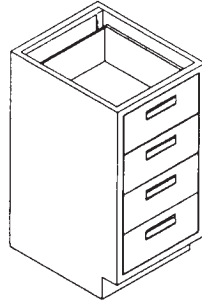
B3515-102(R)
B3518-102(R)
B3524-102(R)

NOTE: When ordering units with configurations that are non-standard, drawings must accompany order.

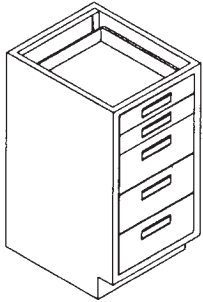
BASE CABINETS *Standing/Counter Height*



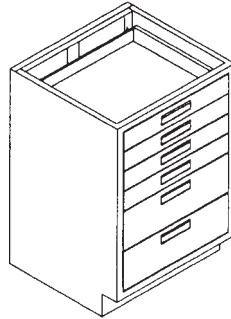
**B3515-F20
B3518-F20
B3524-F20**



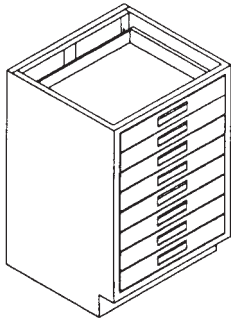
**B3515-040
B3518-040
B3524-040**



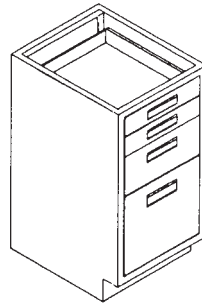
**B3515-032
B3518-032
B3524-032**



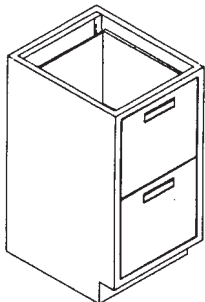
**B3515-024
B3518-024
B3524-024**



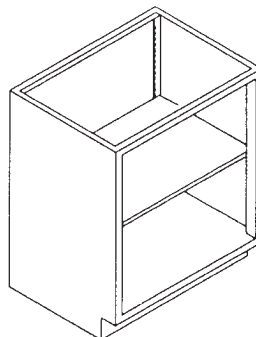
**B3515-008
B3518-008
B3524-008**



**B3515-F12
B3518-F12
B3524-F12**



**B3515-FFO
B3518-FFO
B3524-FFO**

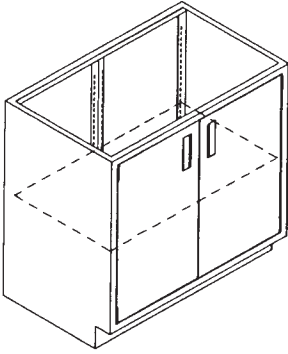


**B3530-000
B3536-000
B3542-000
B3548-000**

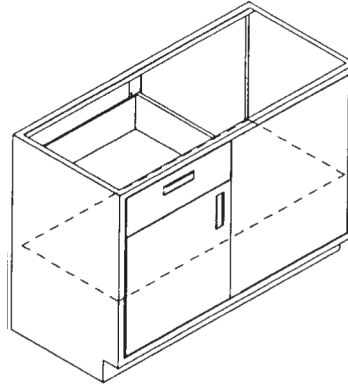
S
L
S
N
L
S

BASE CABINETS *Standing/Counter Height*

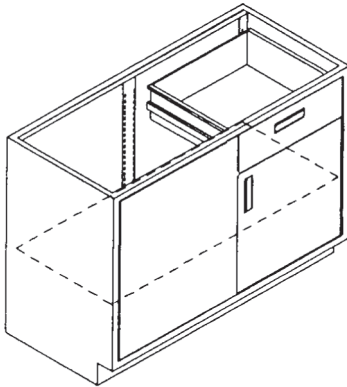
N L S



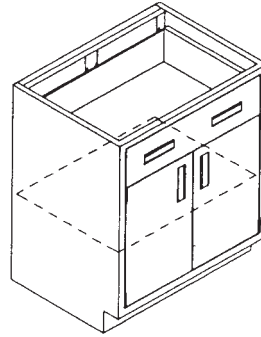
**B3530-200
B3536-200
B3542-200
B3548-200**



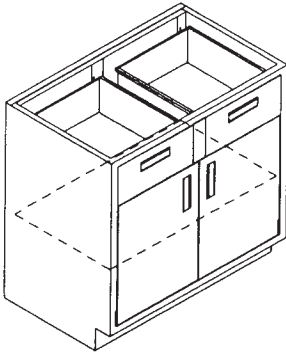
**B3530-110(L)SP
B3536-110(L)SP
B3542-110(L)SP
B3548-110(L)SP**



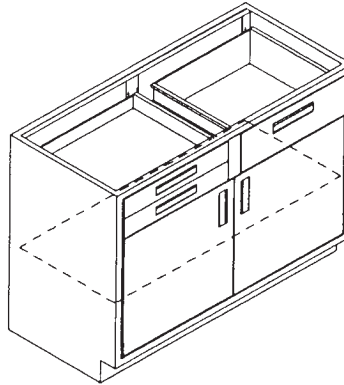
**B3530-110(R)SP
B3536-110(R)SP
B3542-110(R)SP
B3548-110(R)SP**



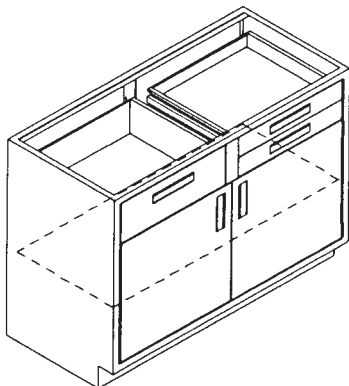
**B3530-210
B3536-210
B3542-210
B3548-210**



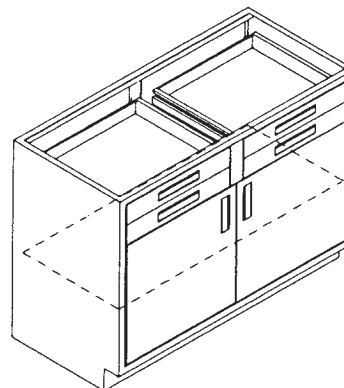
**B3530-220
B3536-220
B3542-220
B3548-220**



**B3530-212A
B3536-212A
B3542-212A
B3548-212A**



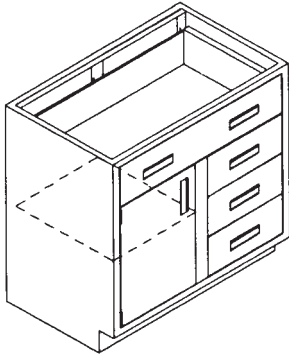
**B3530-212B
B3536-212B
B3542-212B
B3548-212B**



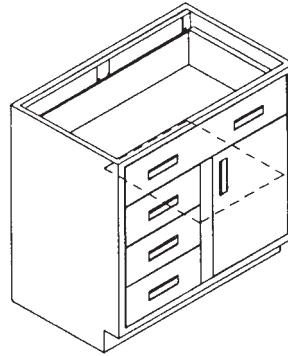
**B3530-204
B3536-204
B3542-204
B3548-204**

BASE CABINETS *Standing/Counter Height*

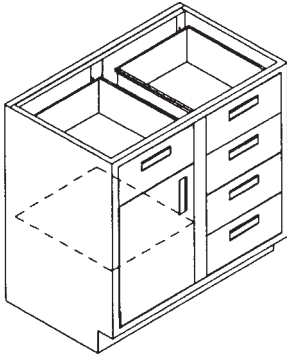
S
L
S



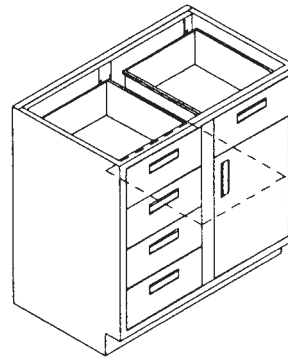
B3530-140B(L)
B3536-140B(L)
B3542-140B(L)
B3548-140B(L)



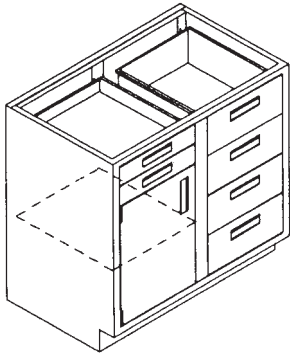
B3530-140B(R)
B3536-140B(R)
B3542-140B(R)
B3548-140B(R)



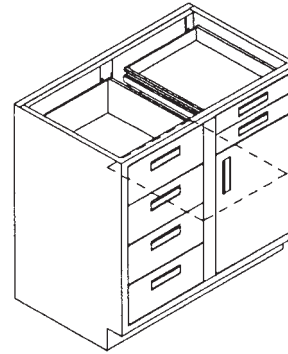
B3530-150(L)
B3536-150(L)
B3542-150(L)
B3548-150(L)



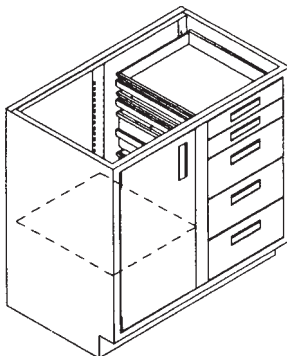
B3530-150(R)
B3536-150(R)
B3542-150(R)
B3548-150(R)



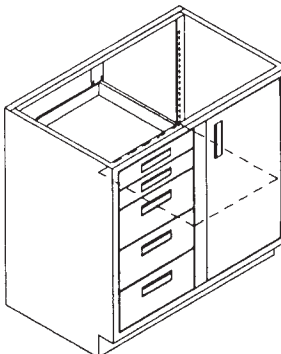
B3530-142(L)
B3536-142(L)
B3542-142(L)
B3548-142(L)



B3530-142(R)
B3536-142(R)
B3542-142(R)
B3548-142(R)



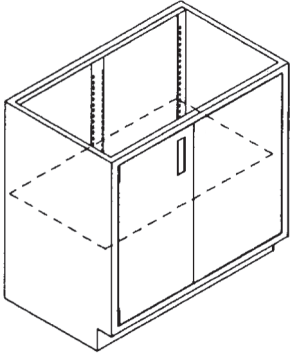
B3530-132(L)
B3536-132(L)
B3542-132(L)
B3548-132(L)



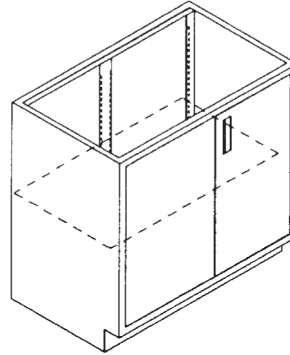
B3530-132(R)
B3536-132(R)
B3542-132(R)
B3548-132(R)

BASE CABINETS *Standing/Counter Height*

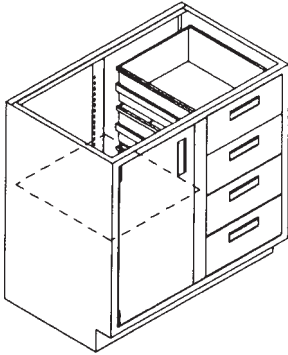
N L S



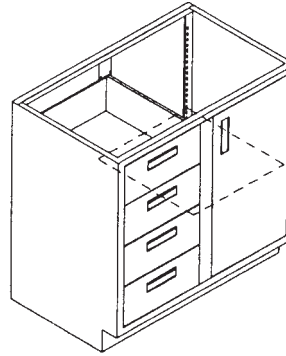
**B3530-100(L)SP
B3536-100(L)SP
B3542-100(L)SP
B3548-100(L)SP**



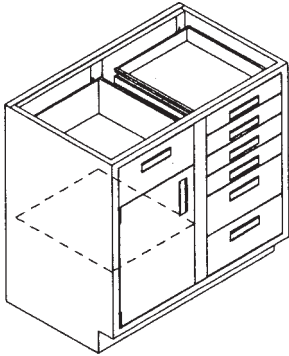
**B3530-100(R)SP
B3536-100(R)SP
B3542-100(R)SP
B3548-100(R)SP**



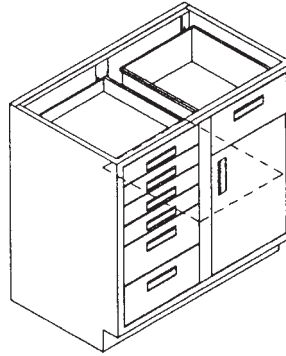
**B3530-140A(L)
B3536-140A(L)
B3542-140A(L)
B3548-140A(L)**



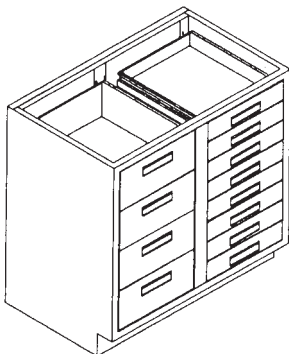
**B3530-140A(R)
B3536-140A(R)
B3542-140A(R)
B3548-140A(R)**



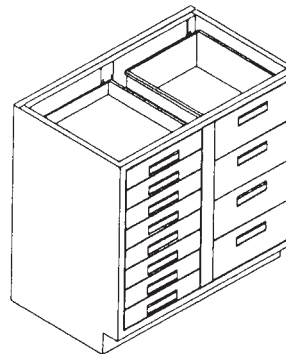
**B3530-134(L)
B3536-134(L)
B3542-134(L)
B3548-134(L)**



**B3530-134(R)
B3536-134(R)
B3542-134(R)
B3548-134(R)**



**B3530-048A
B3536-048A
B3542-048A
B3548-048A**

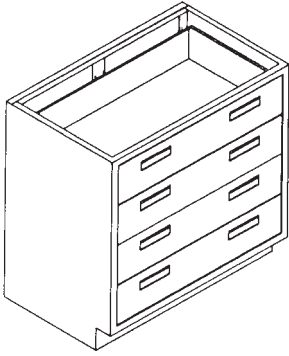


**B3530-048B
B3536-048B
B3542-048B
B3548-048B**

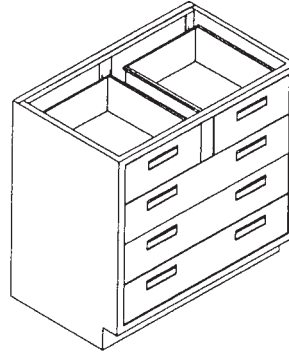
NOTE: When ordering units with configurations that are non-standard, drawings must accompany order.

BASE CABINETS *Standing/Counter Height*

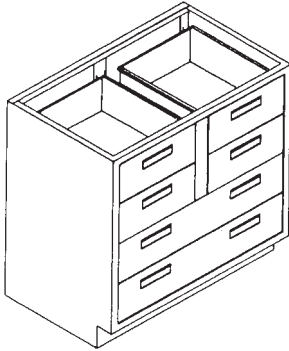
S
L
S



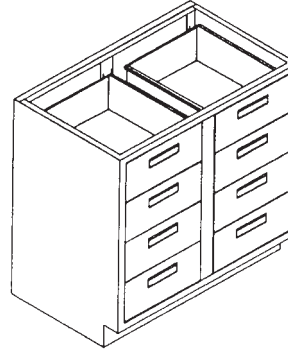
**B3530-040
B3536-040
B3542-040
B3548-040**



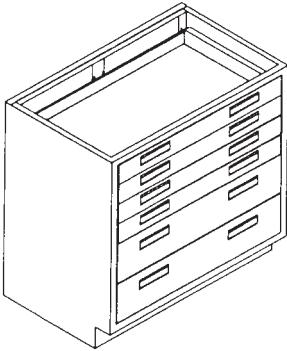
**B3530-050
B3536-050
B3542-050
B3548-050**



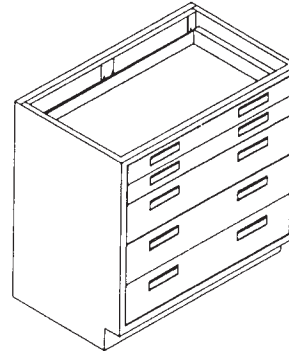
**B3530-060
B3536-060
B3542-060
B3548-060**



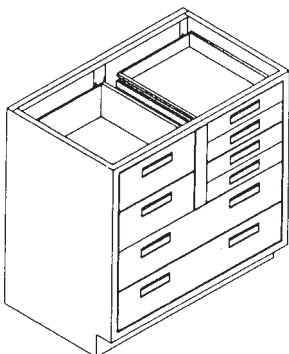
**B3530-080
B3536-080
B3542-080
B3548-080**



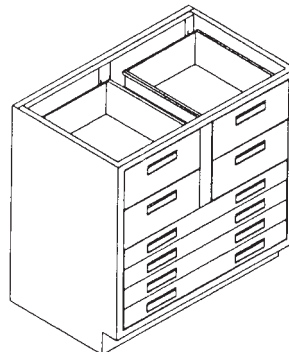
**B3530-024
B3536-024
B3542-024
B3548-024**



**B3530-032
B3536-032
B3542-032
B3548-032**



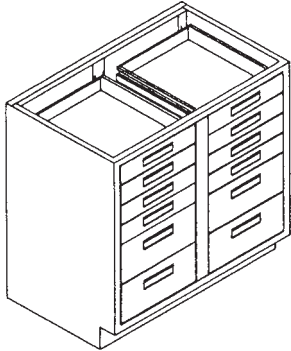
**B3530-044A
B3536-044A
B3542-044A
B3548-044A**



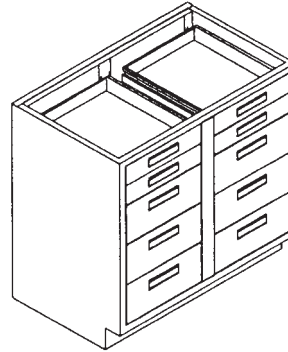
**B3530-044B
B3536-044B
B3542-044B
B3548-044B**

BASE CABINETS *Standing/Counter Height*

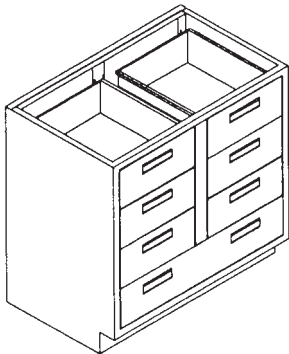
N
L
S



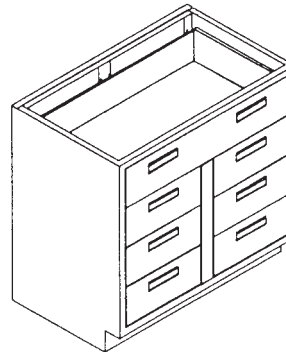
**B3530-048C
B3536-048C
B3542-048C
B3548-048C**



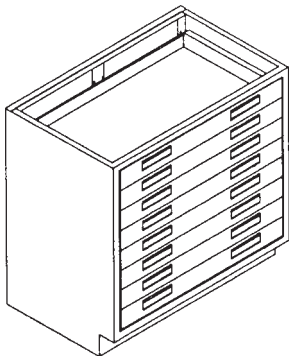
**B3530-064
B3536-064
B3542-064
B3548-064**



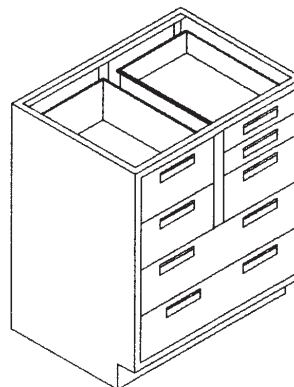
**B3530-070A
B3536-070A
B3542-070A
B3548-070A**



**B3530-070B
B3536-070B
B3542-070B
B3548-070B**



**B3530-008
B3536-008
B3542-008
B3548-008**



**B3530-052
B3536-052
B3542-052
B3548-052**

NOTE: When ordering units with configurations that are non-standard, drawings must accompany order.